



BILL OF MATERIALS

Manufacturing

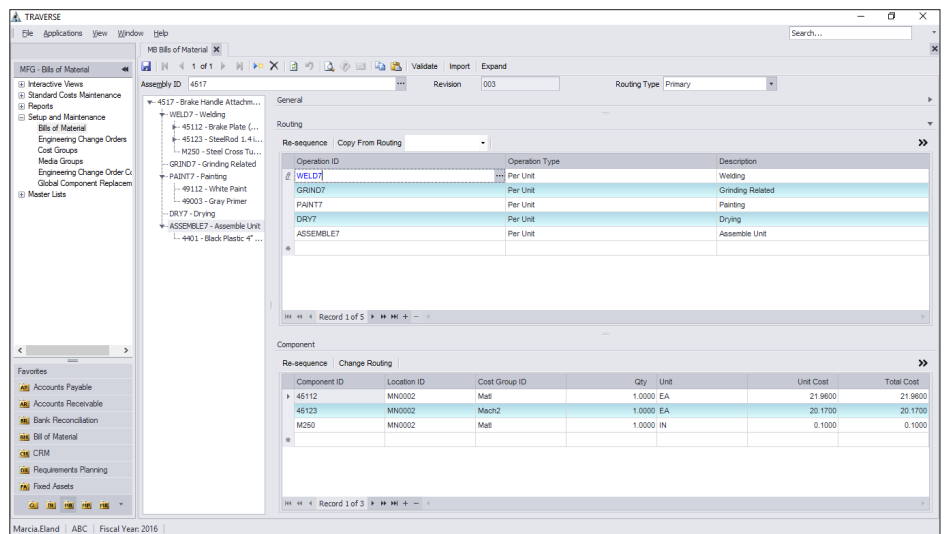
Successful manufacturing software implementation begins with the bills of material. A bill of material (BOM) defines the product structure in terms of materials and provides an optional connection to plant resources such as machinery, tooling, and labor defined by a bill of routing. The Bills of Material application provides a solid base for production activity to be defined, tracked, and reviewed. It also enables more advanced software such as Requirements Planning to be properly utilized.

The software functionality provided gives you the tools you'll need to define both the simplest and most complex bills of material. Bills of Material provides advanced features such as detailed routing, multiple routing definition, mixed unit of measure, cross-group costing, scrap tracking, and total visual documentation.

Revision numbers, effective dates, and drawing numbers help to further define the BOM. You can set up simple, material-only bills quickly and with minimal work.

Standard cost maintenance, global component replacement, BOM change history, and a variety of inquiry functions give you automated update abilities and quick access to vital information.

- Gain insight into current and future availability with available-to-promise quantities and component availability.
- Attach media objects for videos or pictures of assemblies.



The Bills of Material module offers a robust set of built-in features. Cost grouping enables you to break down bill of material costs the way you want.



Applied Business Services, Inc.

1-800-451-7447 | www.appliedbusinessservices.com

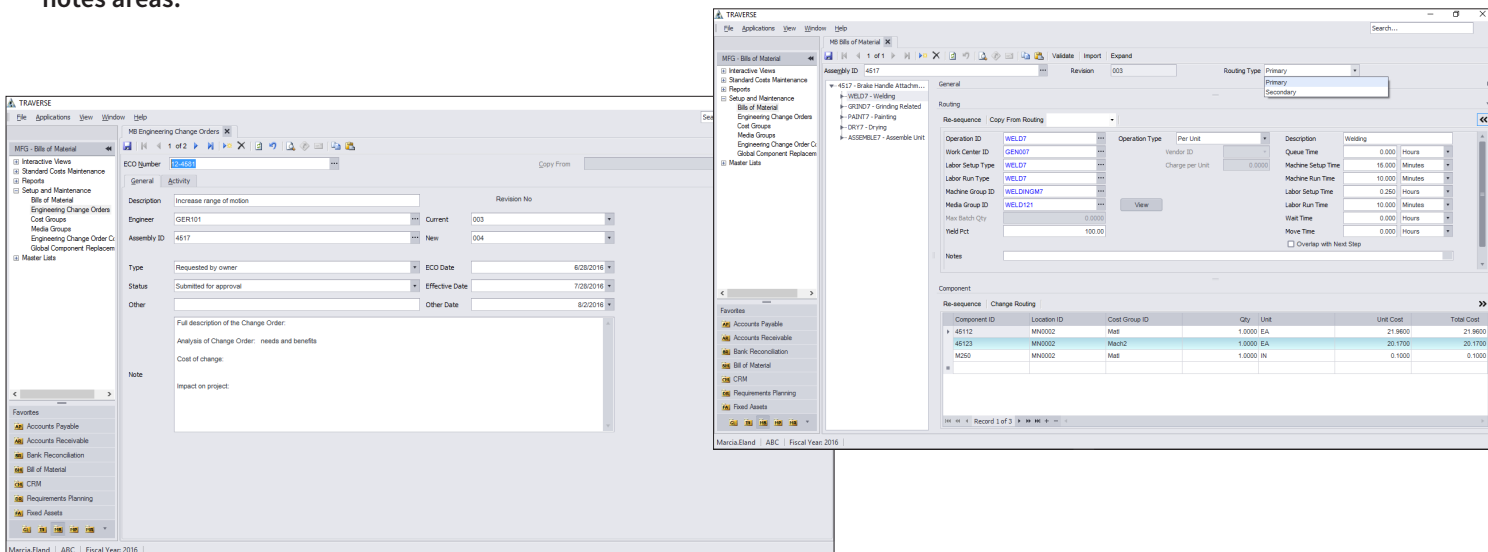
BILL OF MATERIALS

Features:

- Use stock or non-stock components.
- Perform global replacement of components
- Create user-defined cost groupings.
- Apply optional routing definition.
- Create user-defined fields for each assembly.
- Setup new bills easily with copy-from functionality.
- Track engineering change orders (ECO).
- Use unique configuration of labor and machine time for each bill (if interfaced to Routing & Resources application).
- Take advantage of extensive comments and descriptive notes areas.
- Import ASCII files.
- Handle scrap percentages.
- Process overlap enabled (if interfaced to MR application).
- Perform advanced online inquiries.
- Use multiple units of measure.
- Use comprehensive standard cost management with General Ledger interface.
- Choose standard, LIFO, FIFO, or average costing.
- Handle lot-tracked and serialized inventory.

Bill of Materials Reports & Master Lists:

- Costed Bill of Material
- Component Where Used
- Available Components
- Indented Bills of Material
- Summarized Bills of Material
- Bill of Material Worksheets
- Bills of Material List
- Media Groups List
- Engineering Change Orders List



Manage all of your product changes using the Engineering Change Orders function.



Applied Business Services, Inc.

1-800-451-7447 | www.appliedbusinessservices.com