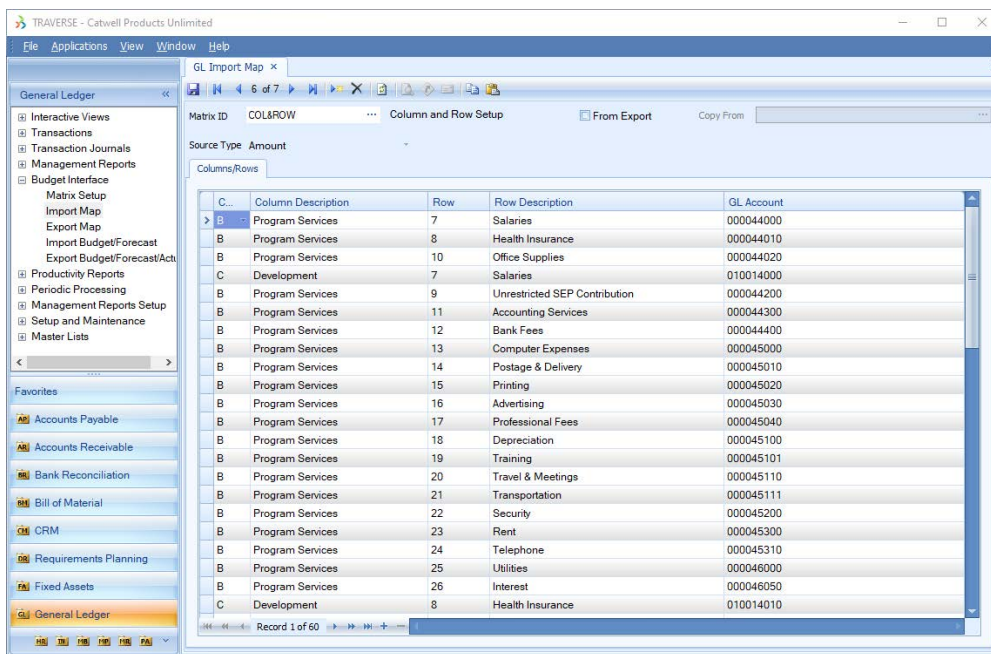




# Budget

The Budget module for TRAVERSE® is an Import/Export utility designed to integrate Excel based budget data with TRAVERSE General Ledger. The Budget can be put into a single period as an annual budget or automatically allocated across 12 or more periods. Import and Export screen inquiries are provided to cross check totals before updating TRAVERSE. Budget is an easy to use tool that simplifies your budgeting, forecasting, and performance processes.



## Benefits of the Budget Module:

- Integration of Excel Budget and Forecast data to TRAVERSE
- Import Budget and Forecast Data directly from Excel
- Export Actual General Ledger Data to Excel
- No Re-keying of Budget and Forecast Data.
- Import into multiple Budget and Forecast Ledgers

There are several mapping styles of budget spreadsheets including Column and Row Coordinates to General Ledger Account, 12-month Budget, Annual Budget with Period Allocation by Percent, and Auto Allocation over 12 or more periods.



Applied Business Services, Inc.

