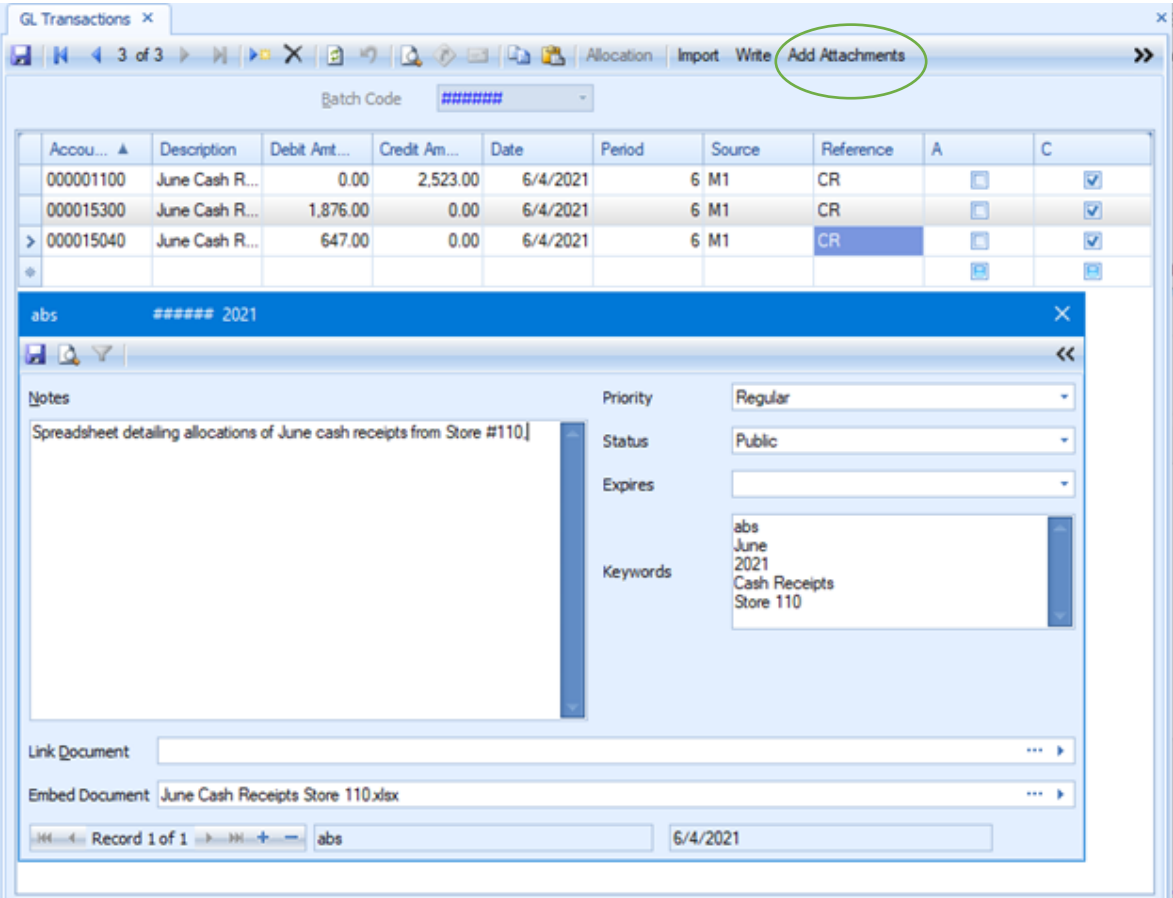


General Ledger Attachments Enhancement For TRAVERSE

ABS has created an enhancement for the General Ledger module which will allow the user to add attachments to postings of journal entries. Notes, files, spreadsheets, and any other supporting documents or background information can be attached in a snap to postings of transactions when they are written. These attachments are visible in the General Ledger interactive views that show transactions as well as in the System Manager Attachments screen.



To see a short video of the General Ledger Attachments feature, click the link below.

[General Ledger Attachments Video](#)



Applied Business Services, Inc.
1-800-451-7447 | www.osasonline.com